



Pioneer Real Estate

106 Post Oak South, PO Box 1220

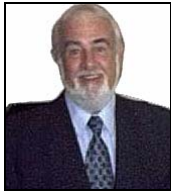
 Hilltop Lakes, TX 77871 

Fax 936 855 2929

Email: waykar@valornet.com

Tel 936 855 2928

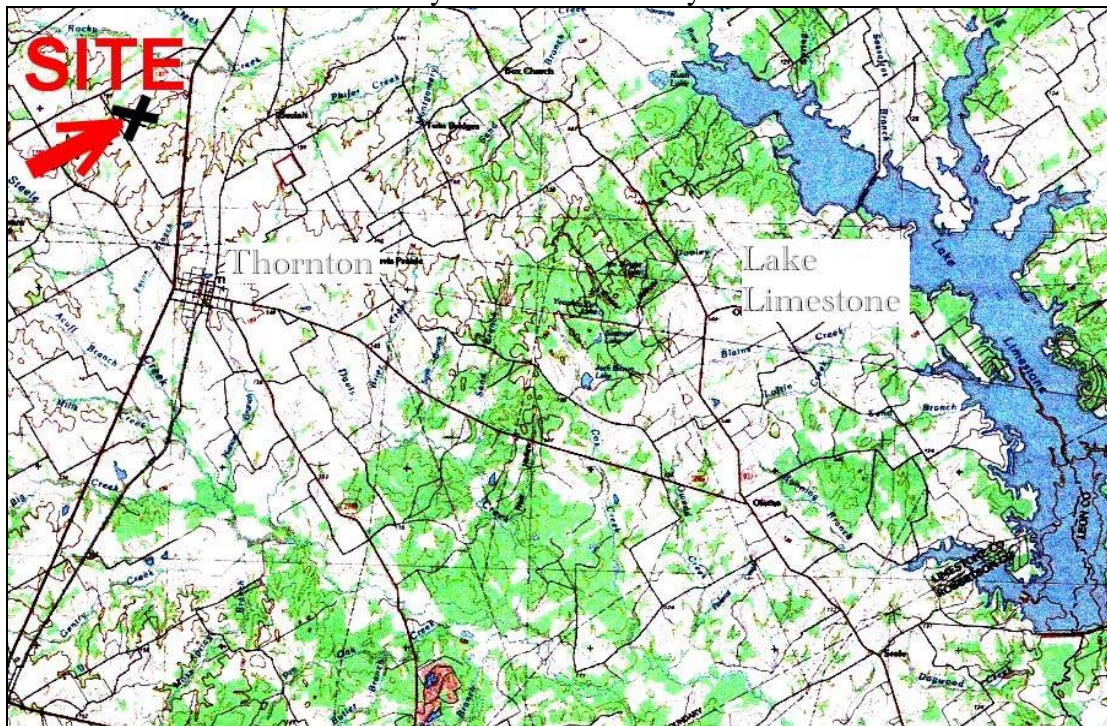
Website: www.hilltoplaketexas.com



336.52 Acres LCR 644
Groesbeck, TX 76642

\$1,750/acre

Limestone County between State Hwy 14 and FM 147



Current Use: native pastureland Other: recreation and hunting Leases: none

Restrictions: No commercial swine or poultry facilities Minerals convey: 1/16th



Wooded areas



Pond in wooded area



Deer stand

A. PUNDERSON A-450

